

No Longer a Safe Haven Currency? A Fresh Evidence of Japanese Yen under Uncertainty

ZHENGZHENG LEE

Business School, Wuchang University of Technology, Wuhan, China

Email: katherine_wcut@126.com

CHI WEI SU

Business School, Wuchang University of Technology, Wuhan, China

Email: cwsu7137@gmail.com (Corresponding author)

RAN TAO

Qingdao Municipal Center for Disease Control & Prevention

taotao0212@163.com

Received: 29 March 2019; Accepted: 16 September 2022.

Abstract: This paper aims to study the safe haven attribute of the Japanese yen under domestic and U.S. economic and policy uncertainty (EPU). Because of the existence of structural changes, a bootstrap rolling window subsample causality test is used to enhance the credibility of the results. The empirical results confirm that the exchange rate returns (RER) and Japanese EPU are correlated in specific periods when major economic or political events occur. In most crisis periods, the Japanese EPU has positive effects on RER, and the yen appreciates when the EPU is increasing. In addition, the RER of the yen and U.S. EPU are both negatively and positively connected. This finding confirms the hedging function of the yen in certain periods. The reason for this relationship is that Japan's low interest rates make the yen the primary funding currency in speculative carrying trade strategies, and thus, it tends to appreciate during crisis periods regardless of the origins of the EPU shocks. Therefore, the yen can be held as a safe haven currency unless the government intervenes artificially.

Keywords: Japanese yen; Economic policy uncertainty; Exchange rate; Bootstrap rolling window causality test; Safe haven

JEL Classification: C32 E52 F31

1. Introduction

The Japanese economic policy uncertainty (EPU) experienced several rounds of soaring in recent decades. The Japanese yen (JPY) maintained its superior performance in times of extreme market events, such as the global financial crisis and the European debt crisis. Consequently, the JPY has been regarded as a safe haven currency in terms of its effectiveness in hedging financial stress (Cheng Xin *et al.*, 2021). That is, an asset that offers hedging benefits is uncorrelated or negatively correlated with the performance of the economy. Subsequently, the safe-haven attribute of the JPY has also been demonstrated during the Great East Japan Earthquake and global COVID-19 pandemic. However, with the escalation of the crisis between Russia and Ukraine in 2022, the JPY showed a dramatic downwards trend, with a 13% depreciation within one quarter. Specifically, the JPY reached the lowest level in 20 years, from 115 yen/dollar in early 2022 to 130 yen/dollar on May 11. Therefore, the risk-off characteristic of the JPY in periods of turmoil has been called into doubt, arousing our attention.

To mitigate the negative influence of exchange rate fluctuations on the Japanese economy, foreign exchange market interventions are conducted as needed. Such fluctuation is an essential part of the transmission mechanism in the determination of economic policy because movements in exchange rates significantly affect a country's foreign trade and international capital investments. Furthermore, since Japan and the U.S. are close economic and political partners, EPU in either the home country or the U.S. increases exchange rate volatility for integrated industrial economies (Robert Krol, 2014). Hence, we investigate how the exchange rate of the JPY responds to the uncertainty of Japan and the U.S. to verify the safe-haven attribute of the JPY.

We contribute to the literature by tracing the recent large fluctuations of JPY under uncertainty. The JPY performed strongly during the COVID-19 pandemic but demonstrated weakness during the Russia and Ukraine conflict, which is the opposite of the performance of the U.S. dollar. This paper investigates some possible reasons underlying this phenomenon. Furthermore, we apply a time-varying technique in the causality test between EPU and the exchange rate returns (RER) in Japan. This method reveals how such relationships vary over time in subsample periods and helps us judge when the JPY has the hedging attribute.

2. Literature Review

Concerns about policy uncertainty have intensified in the wake of the global financial crisis, trade conflicts, and COVID-19 pandemic. Scholars have shown great interest in the measurement of uncertainty. The Chicago Board Options Exchange (CBOE) Volatility Index (VIX) is usually regarded as a measure of market uncertainty (Ihsan Badshah, Demirer Riza, and Suleman Tahir Muhammad, 2019; Ladislav Kristoufek, 2020). Additionally, implied stock market volatility can also be a benchmark for economic uncertainty. For instance, the volatility of the S&P 500 stock market is a measurement for U.S. uncertainty, whereas the Nikkei stock average volatility is an indicator of uncertainty in Japan (Giray Gozgor, 2014; Kumar Aviral Tiwari, Jana R. K., and Roubaud David, 2019). However, the most popular index for EPU is proposed by Scott R. Baker, Bloom Nicholas, and Davis J. Steven (2016). They develop a newspaper-based approach to measuring economic uncertainty.

The impact of EPU on economic and financial variables has been widely discussed. Uncertainty can affect precautionary spending by raising pressure on the cost of finance (Lubos Pastor and Veronesi Pietro, 2012) and increasing managerial risk aversion (Vasia Panousi and Papanikolaou Dimitris, 2012). Sanjai Bhagat, Ghosh Pulak, and Srinivasan P. Rangan. (2013) find that gross domestic product (GDP) and fixed investment are negatively related to EPU because higher uncertainty causes firms to pause or prolong their investment (Nick Bloom, Bond Stephen, and Reenen Van John, 2007). Jonathan Brogaard and Detzel Andrew (2015) have recently proven that EPU affects equity by increasing the risk premium. However, Su *et al.*'s (2016) results fail to confirm that the uncertainty of the economic policy influences the real estate market, although the feedback is obvious. Although Bitcoin returns are negatively associated with EPU, the effect is positive and significant at both lower and higher quantiles of Bitcoin returns and EPU (Ender Demir *et al.*, 2018; David Su *et al.*, 2022a). In addition, EPU also influences the connectedness of financial assets, especially in periods of turmoil (Zheng-Zheng Li *et al.*, 2019; 2022).

From the perspective of theoretical research, Craig S. Hakkio and Pearce K. Douglas (1985) highlight that the foreign exchange market receives an array of information, including changes in economic policies, economic fundamentals, social and political conditions and financial market sentiment. Such information will lead to the exchange rate becoming sensitive to economic variables. Thus, they conclude that a

particular relationship between the exchange rate and economic policy changes exists. Robert J. Hodrick (1989) distinguishes the role of uncertainty in explaining the exchange rate determination based on the partial and general equilibrium model. Specifically, when uncertainty is high, domestic agents prefer to invest in assets denominated in the foreign currency, implying that the value of the domestic currency relative to the foreign currency depreciates (Gianluca Benigno *et al.*, 2012).

Empirically, Mehmet Balcilar *et al.* (2016) use the nonparametric causality-in-quantiles test and point out that EPU does not affect exchange rate returns in either high or low quantiles in Japan. Yosuke Kido (2016) analyses the spillover effects of EPU in the U.S. shock on real effective exchange rates. The researcher finds that the correlations between the EPU and high carry currencies, such as the Australian dollar, Korean won and Mexican peso, are consistently negative, and these correlations are intensified during recession periods. Zachary Bartsch (2019) analyses high-frequency data and finds that dollar-pound exchange rate volatility is more sensitive to U.K. EPU than to U.S. EPU. In contrast, the opposite evidence is provided by Valentina Colombo (2013). Furthermore, Benigno *et al.* (2012) propose that an increase in uncertainty does not necessarily lead to currency depreciation, explaining that uncertainty may improve the hedging properties of the currency, thus leading to a rise in its demand and consequent appreciation. Liming Chen, Ziqing Du, and Hu Zhihao (2020) confirm that Europe and Japan EPUs display inverted-U-shaped correlations with exchange rate volatility in China. Panpan Wang, Li Yishi, and Wu Sixu (2022) determine that the rising U.S. EPU amplifies the renminbi exchange rate return volatility, and volatility spillover is further enhanced by trade friction.

Previous literature has conducted a few investigations regarding Japan's EPU and exchange rate, a critical topic for an export-oriented economy. Foreign trade became the primary recovery area in the Japanese economy during the COVID-19 pandemic period. Furthermore, the latest research does not concentrate on the unconventional changes in the JPY exchange rate in May 2022. A dramatic downward trend with a 13% depreciation of JPY has occurred in the foreign exchange market. This phenomenon has attracted our interest in providing fresh evidence on the interaction between EPU and the exchange rate in Japan. In addition, extant researchers have ignored the time-varying characters in their analyses (Joscha Beckmann and Robert Czudaj, 2015). Most literature only considers the conventional causality relationship and is susceptible to

unstable results because of structural changes in the time series. In recent decades, Japan has experienced economic restructuring and structural changes in its economic policy. Considering the presence of structural changes, the dynamic links between the two series will show instability across different subsamples. Moreover, previous studies have not considered U.S. EPU. The U.S. maintains close economic, political, and military cooperation with Japan. Thus, uncertainty from the U.S. may influence the JPY exchange rate.

3. Theoretical Model

In terms of supply, EPU may indicate changes in national policies during periods of financial turmoil. Generally, the authorities implement an easing monetary policy, leading to an increase in supply and a decrease in RER. From the demand side, the transmission mechanism between EPU and RER can be obtained through the general equilibrium model (Pastor and Veronesi, 2012). Suppose that there is an economy with a continuum of foreign exchange rate investors i ($i \in [0,1]$) and a finite horizon $[0, T]$. All investors continue to invest linearly in JPY, and the return of JPY (RER_t^i) is arbitrary. The equation of capital accumulation of investor i is $dA_t^i = A_t^i dRER_t^i$, where A_t^i indicates the capital stock of investor i when the time is t . Then, we can construct the equilibrium model as Equation (1):

$$dRER_t^i = (g + u_t)dt + \beta_0 dZ_t + \beta_1 dZ_t^i \quad t \in [0, T] \quad (1)$$

where g is a constant, and β_0 and β_1 are the observable coefficients. Z_t is a Brownian motion, and Z_t^i is an independent Brownian motion for investor i . u_t indicates that government economic policy affects the average profitability process of each investor. u^{old} refers to the effects of current economic policy. Suppose the policy can be adjusted at time t ($0 < t < T$); the government should decide whether to change it. If the government changes the current economic policy, the effects replace u^{old} with u^{new} . This process can be expressed as follows:

$$u_t = \begin{cases} u^{old} & \text{for } t \leq t \\ u^{old} & \text{for } t \leq t \text{ if the government does not change the policy} \\ u^{new} & \text{for } t \leq t \text{ if the government changes the policy} \end{cases} \quad (2)$$

When $t = 0$, both u^{old} and u^{new} subject to $u \sim N(0, \sigma_u^2)$. Then, EPU can be expressed by σ_u . While we can observe that u^{old} and u^{new} differ considerably, the size of the difference between these two values cannot be determined. Hence, the general equilibrium model states that EPU exerts certain impacts on RER, but the

direction cannot be identified. If RER can be positively affected by EPU, it indicates that JPY can be considered a safe-haven currency, since its return will increase during periods of high policy uncertainty and vice versa.

4. Methodology

In the VAR model, statistics such as the likelihood ratio (LR) and the Lagrange multiplier (LM) may not have standard asymptotic distributions because structural changes always exist in a time series (Christopher A. Sims, Stock H. James, and Watson W. Mark, 1990). Therefore, Hiro Y. Toda and Yamamoto Taku (1995) propose a modified Wald test, which acquires a standard asymptotic distribution for the Wald test by estimating an augmented VAR model with $I(1)$ variables. However, this test fails in small and medium samples per the Monte Carlo simulations. Ghazi Shukur and Mantalos Panagiotis (2000) consider the critical values of the residual-based bootstrap (RB) method, and Mehmet Balcilar, Ozdemir Abidin Zeynel, and Arslanturk Yalcin (2010) confirm its effectiveness without considering whether the two variables are cointegrated. The RB method is particularly excellent for standard asymptotic tests and power and size properties in small-sample corrected LR tests. Thus, we choose the RB-based modified LR statistic.

Firstly, the VAR process can be written as follows:

$$y_t = \varphi_0 + \varphi_1 y_{t-1} + \dots + \varphi_p y_{t-p} + \varepsilon_t, t = 1, 2, \dots, T \quad (3)$$

where y_t follows a zero mean, independent, white noise process with nonsingular covariance matrix, and optimal lag length p can be obtained from the Schwarz Information Criteria (SIC). By splitting into two sub-vectors as the following:

$$\begin{bmatrix} EPU_{1t} \\ RER_{2t} \end{bmatrix} = \begin{bmatrix} \varphi_{10} \\ \varphi_{20} \end{bmatrix} + \begin{bmatrix} \varphi_{11}(L) & \varphi_{12}(L) & \varphi_{13}(L) \\ \varphi_{21}(L) & \varphi_{22}(L) & \varphi_{23}(L) \end{bmatrix} \begin{bmatrix} EPU_{1t} \\ RER_{2t} \\ US_{3t} \end{bmatrix} + \begin{bmatrix} \varepsilon_{1t} \\ \varepsilon_{2t} \end{bmatrix} \quad (4)$$

where US is the controlling variable, denoting the EPU index of U.S. $\varphi_{ij}(L) = \sum_{k=1}^{p+1} \varphi_{ij,k} L^k$, L is the lag operator ($L^k x_t = x_{t-k}$).

We test the null hypothesis that the RER does not Granger cause the EPU by imposing the restriction where $\varphi_{12,k} = 0, k=1, 2, 3, \dots, s$. The null hypothesis that the EPU does not Granger cause the RER can be similarly tested. Thus, if the null hypothesis is rejected, the RER significantly Granger causes the EPU.

The VAR model obtains that the parameters are constant, which may be incorrect

if structural changes exist. This error will lead to unstable causal links (Mehmet Balcilar and Ozdemir Abidin Zeynel, 2013). Thus, we test the stability of parameters in both the short and long terms. Short-term parameter stability can be evaluated by the Sup- F , Mean- F and Exp- F tests (Donald WK Andrews, 1993). We also use the Lc test from Jukka Nyblom (1989) to examine whether the long-term parameters are stable. These tests are calculated from the sequence of LR statistics, which examine the stability of parameters versus the alternative of a single structural break at an unknown point. Andrews (1993) notes that statistics require 15% trimming from both ends of the sample to test the stability of the parameters in the short term. Thus, the fraction of the sample in (0.15, 0.85) is needed.

There are two advantages of using the rolling-window bootstrap method. First, a rolling window applies when the causal link between variables is time-varying. Second, a rolling method is unstable in different subsamples because structural changes exist. The rolling window techniques rely on fixed-size subsamples sequentially rolling from the beginning to the end of the full sample (Balcilar *et al.*, 2010). Suppose the rolling window includes m observations; then, we can obtain $T-s$ subsamples, that is, $\tau-s+1$, $\tau-s+2$, ..., T for $\tau=s, s+1, \dots, T$. Every subsample can be estimated, and the RB-based modified-LR test can ensure the accuracy of the results. The time-varying causality between RER and EPU can be intuitively observed by calculating the bootstrap p values of these estimations. We utilize the rolling method to obtain many estimations; their average $(N_b^{-1} \sum_{21,k}^p \hat{\varphi}_{21,k}^*, N_b^{-1} \sum_{12,k}^p \hat{\varphi}_{12,k}^*)$ is defined as the impact of the EPU and the RER, which are the explained variables. In addition, N_b^{-1} is the repetitions of the bootstrap, and both $\hat{\varphi}_{21,k}^*$ and $\hat{\varphi}_{12,k}^*$ are bootstrap estimates from the VAR models. In the confidence interval of 90%, the lower and upper limits equal the 5th and 95th quantiles of each bootstrap estimate (Balcilar *et al.*, 2010).

5. Data

We choose the monthly data of the real effective exchange rate (REER) and the EPU index ranging from January 2000 to March 2022, which are sourced from the Federal Reserve Bank of St. Louis. Japan's EPU index is constructed by four major Japanese newspapers (Yomiuri, Asahi, Mainichi and Nikkei) that contain at least one term in each of three categories: (E) 'economic' or 'economy'; (P) 'tax,' 'government spending','regulation,' 'central bank' or certain other policy-related terms; and (U)

'uncertain' or 'uncertainty'¹. Therefore, Japan's EPU index primarily reflects the changes in economic uncertainty related to Japanese policies. The U.S. EPU index is similarly constructed². Figure 1 displays the evolution of EPU in Japan and the U.S. and the REER of the JPY. According to Figure 1, the fluctuations of these two EPU indices are approximately synchronized. The EPU in Japan and the U.S. grew high at the beginning of the 21st century due to the collapse of the dot-com bubble. Then, the U.S. EPU hit a historical peak during the global financial crisis in 2008 and the consequent economic recession. At the same time, Japan encountered frequent presidential turnover between 2007 and 2012, causing EPU to spike. Such changes were compounded by the Fukushima earthquake and nuclear accident in 2011 and the following aggressive economic reforms by Prime Minister Abe. The global trade tension in 2018 and the COVID-19 pandemic in 2020 affected both the EPU indices for both Japan and the U.S. (Chi-Wei Su *et al.*, 2022b).

The REER is obtained as weighted averages of bilateral exchange rates adjusted by relative consumer prices, reflecting the currency's actual value (James R. Lothian, 2016). To ensure the stationarity of the exchange rate, we take the logged differences, which is known as the exchange rate returns (RER) of the JPY in the empirical research. From Figure 1, we find that the REER of the JPY experienced significant fluctuations during the sample periods. Following the JPY peak in 2001, it weakened over the next few years. When the Japanese economy witnessed the global financial crisis in 2008, the JPY demonstrated relatively stable performance, since one of the "Abenomics"³ targets was to weaken the JPY to stimulate exports and the global economy by issuing excessive money and implementing loose monetary policy (Rishi Goyal and McKinnon Ronald, 2013). After averaging 79 JPY per dollar in the first 10 months of 2012, the JPY weakened rapidly against the dollar over the next few years to 120 JPY per dollar (Hausman K. Joshua and Wieland F. Johannes, 2014). The turmoil caused by the Brexit event and global trade tension led the JPY to rebound, presenting its predominant safe-

¹ Sourced from: [Economic Policy Uncertainty Index](#).

² EPU in U.S. is an index of search results from 10 large newspapers (USA Today, the Miami Herald, the Chicago Tribune, the Washington Post, the Los Angeles Times, the Boston Globe, the San Francisco Chronicle, the Dallas Morning News, the Houston Chronicle, and the WSJ).

³ 'Abenomics' refers to a new, unconventional economic policy regime in Japan since late 2012 (Shin-ichi Fukuda, 2015). It consists of the three arrows: unconventional monetary policy (the first arrow), expansionary fiscal policy (the second arrow), and economic growth strategies to encourage private investment (the third arrow).

haven function. Furthermore, the recent COVID-19 pandemic did not suppress the status of the JPY in the foreign exchange market. However, a significant depreciation has occurred in the JPY since May 2022, when the Bank of Japan (BOJ) maintained low interest rates, in sharp contrast to the U.S. interest rate hike. Supply-side disruptions stemming from the global pandemic and the war in Ukraine coupled with the weak JPY drove up domestic commodity prices. The JPY slid to its lowest level in 20 years, going above 130 per U.S. dollar.

< Figure 1 is inserted about here >

6. Empirical Result

Table 1 highlights summary statistics for the variables. The EPU for both Japan and the U.S. have taken natural logarithms. As shown, the mean, maximum values and standard errors of EPU in the U.S. are larger than those in Japan. This result suggests that the EPU index in the U.S. fluctuates more sharply than in Japan. Additionally, the kurtosis in the RER and U.S. EPU are larger than 3, indicating that they are leptokurtotic rather than normally distributed. The Jarque–Bera test results suggest that the RER series are approximately nonnormal distributions. The three series are stationary based on the unit root test.

< Table 1 is inserted about here >

When structural changes are considered, the parameters in the VAR model will vary with time, leading to an unstable relationship. Therefore, there is a default assumption in the previous literature that structural changes do not exist in time series (Chi-Wei Su *et al.*, 2021; 2022c). For this purpose, this paper primarily tests for parameter stability and examines the structural changes. The Sup- F , Mean- F and Exp- F tests are used to assess the temporal stability of the parameters in the VAR models. The Lc test of Nyblom (1989) is also used to test all parameters in the overall VAR system. The corresponding results are reported in Table 2. The Sup- F tests under the null hypothesis of parameter constancy against a one-time sharp shift in parameters are reported in the first row. The results suggest that a one-time sharp shift exists in the EPU, RER and U.S. equations at the 1% level and exists in the VAR system at the 5% level. The Mean- F and Exp- F tests under the null hypothesis that parameters follow a martingale process against the possibility that the parameters may evolve gradually are presented in the second and third rows, respectively. The results suggest that the equations of the EPU, RER, U.S. and the VAR system may vary gradually with time.

The Lc tests against the alternative that the parameters follow a random walk process, which indicates that the parameters are nonconstant in the overall VAR models. Overall, these results provide robust evidence that short-term instability exists in the parameters of the estimated VAR model.

< Table 2 is inserted about here >

In the subsample rolling window causality test, we employ RB -based modified- LR causality tests to examine the causal relationship between the RER and EPU. The null hypothesis of the tests is that EPU does not Granger cause RER and vice versa. A 24-month window size is selected to ensure the accuracy of the model estimates and the representativeness of the method over the subsample periods based on Monte Carlo simulations (Hashem M. Pesaran and Allan Timmermann, 2005).

< Figure 2 is inserted about here >

Figure 2 shows the rolling bootstrap of the LR statistics' p values and the impact magnitudes using the RER as a dependent variable in Japan, where the U.S. uncertainty index is a controlling variable. According to the p values of LR statistics, the null hypotheses can be rejected when the rolling bootstrap of the p value is less than 10 percent. We further observe that the null hypothesis is rejected in 2008:01-2008:02, 2012:01-2013:02 and 2018:12-2019:02, indicating that EPU has a significant effect on RER in these periods. Based on the second figure, we can determine that the average impact of EPU on RER is positive in these periods. Although the model controls for the uncertainty index of the U.S., the impact of the subprime mortgage crisis in the U.S. was propagated to the Japanese economy through international trade. Japan's trade dependence has increased since the early 2000s, and it is particularly vulnerable to negative demand shocks originating externally (Masahiro Kawai and Shinji Takagi, 2011). The economy was adversely impacted by the 2008 recession, increasing domestic EPU. Specifically, the Japanese annual GDP growth rate in 2009 was -5.5% due to the severe decline in real exports of 26.2% (Naohisa Hirakata *et al.*, 2016). However, since its low interest rate and strong net foreign asset position were maintained, Japan's relatively resilient financial system initially alleviated the direct external impact (Kawai and Takagi, 2011). The JPY strengthened in the sharp financial market deterioration period starting from September 2008, with over 20 percent appreciation, behaving as a safe-haven currency in the global financial market crisis (Dimitriou Dimitrios and Kenourgios Dimitris, 2013). The Japanese government adopted a three-pronged

approach (“Three Arrows of Abenomics”) to revive the economy through flexible fiscal policy, aggressive monetary easing, and bold structural reforms to raise long-term growth. One pillar of Abenomics called on the BOJ to print unlimited quantities of the JPY to reach its inflation target. The JPY subsequently depreciated against the U.S. dollar (Willem Thorbecke, 2022). Generally, investors’ activity in carrying trade strategies exerted an enormous impact on foreign exchange market volatility. High capital inflow to countries with higher interest rates contributed to their currency appreciation. In turn, high outflow of capital from countries with a low interest rate led to a significant currency depreciation. The combination of a decline in global risk aversion, the larger trade deficit, and the widening of the expected interest rate differential with the U.S. contributed to a depreciation of the JPY by close to 30 percent, effectively, between July 2012 and September 2013. More recently, the JPY depreciated substantially until the onset of the “tapering” discussions in the United States in May 2013. In quiet periods, the JPY has generally served as a carry trade funding currency and has tended to depreciate against higher-yielding currencies. In regard to 2018M12-2019M02, EPU rose again amid concerns about developments in China, a new negative interest rate policy, the Brexit referendum, consumption tax hike delays, and intensifying trade policy tensions in 2018 and 2019 (Arbatli C. Elif *et al.*, 2022). The JPY acted as a safe-haven currency because investors tended to buy JPY and reduce overseas investment to diminish risk.

< Figure 3 is inserted about here >

According to Figure 3, U.S. uncertainty has significant effects on the JPY RER in 2017:01-2018:12. During the sample period, the correlation between U.S. uncertainty and the JPY RER was both negative and positive, suggesting that when the uncertainty increased, the JPY RER first decreased and then increased. After Donald Trump became the U.S. president, uncertainty increased as tax reductions and global trade wars increased. However, the JPY showed a downwards trend because of domestic ultraloose monetary policy. Since the tariff conflict between U.S. and China had been intensifying, trade frictions had spread to the U.S. with other North American Free Trade Agreement (NAFTA) members, Europe, East Asia and practically the rest of the world (Dan Steinbock, 2018). The tariffs placed on China limited their export volume to the U.S., which increased the opportunity for Japan to export a larger volume of its products. In that case, Japan increased the U.S. dollar inflow, which increased the value of the JPY.

This situation explains the positive comovement between U.S. uncertainty and the JPY RER.

7. Conclusion and Implication

The objective of this paper is to investigate the safe-haven attribute of the JPY under uncertainty. In recent decades, Japan has experienced a series of economic fluctuations. The global financial crisis and the subsequent natural disasters in 2011 exercised a significant shock to the JPY exchange rate. Although the JPY appreciated during the global financial crisis, exports were severely overpriced, which was intensified by the global economic recession. The government budget deficit-to-GDP ratio has reached 200% (Naoyuki Yoshino and Taghizadeh-Hesary Farhad, 2014). The Japanese economy requires a stimulus to escape from a severe pattern of slow growth in the long term. Prime Minister Abe's administration carried out economic reform in 2013, depreciating the JPY. Since then, the JPY has acted as a safe-haven currency during Brexit, trade wars and the COVID-19 pandemic. However, the JPY showed a dramatic downwards trend in May 2022 when the crisis between Russia and Ukraine began. Considering the nonlinear characteristics of EPU and the exchange rate due to significant economic and political events, we infer that the time series may have structural breaks that will lead to unstable results. By employing the parameter stability examination, we confirm that short-run instability exists in the parameters of the estimated VAR model. Therefore, the bootstrap subsample rolling window causality test method is a superior choice when the parameters are nonconstant.

On the one hand, the RER and Japanese EPU are correlated in specific periods, where the U.S. uncertainty is defined as the controlling variable. Specifically, in 2008:01-2008:02, 2012:01-2013:02 and 2018:12-2019:02, there are positive effects of EPU on RER, which conform to the risk-off attribute of the JPY. On the other hand, the impact of U.S. uncertainty on RER in 2017:01-2018:12 is both negative and positive. This finding confirms the safe-haven function of the JPY in certain periods because Japan's low interest rates make it the primary funding currency in speculative carrying trade strategies, and, consequently, the JPY tends to appreciate during crisis periods regardless of EPU shock origin.

Based on the results, the following implications can be inferred. First, the JPY tends to appreciate when uncertainty rises. Thus, the JPY seems to be an excellent example of a safe-haven currency that serves as a hedge for global investors during

crisis periods. In the case of economic turmoil, such as the bursting of asset price foam and the tense international trade environment, the Japanese yen can be held as a safe-haven currency. However, this does not always obtain in practice. The government usually implements easing monetary policy to deal with economic recession and actively devalues the currency. In this case, the risk-off character of the JPY no longer exists, which applies to the depreciation of the JPY during the Russian-Ukrainian war. Furthermore, uncertainty from the U.S. can influence the RER of the JPY because of the two countries' close partnership. This finding provides evidence for preventing international exchange rate risk spillovers. Finally, we find that the exchange rate is an essential indicator for affecting EPU. Therefore, the BOJ could implement interventions to the exchange rate to influence the public's expectation to enable EPU to stabilize the economy.

Reference

- Andrews, Donald WK. 1993. "Tests for Parameter Instability and Structural Change with Unknown Change Point." *Econometrica*, 61(4): 821-856. <https://doi.org/10.2307/2951764>
- Arbatli, C. Elif, Davis J. Steven, Ito Arata, Miake Naoko. 2022. "Policy uncertainty in Japan." *Journal of the Japanese and International Economies*, 64: 101192. <https://doi.org/10.1016/j.jjie.2022.101192>
- Badshah, Ihsan, Riza Demirer, and Muhammad Tahir Suleman. 2019. "The effect of economic policy uncertainty on stock-commodity correlations and its implications on optimal hedging." *Energy Economics*, 84: 104553. <https://doi.org/10.1016/j.eneco.2019.104553>
- Bahmani-Oskooee, Mohsen, and Huseyin Karamelikli. 2018. "Japan-US trade balance at commodity level and asymmetric effects of Yen-Dollar rate." *Japan and the World Economy*, 48: 1-10. <https://doi.org/10.1016/j.japwor.2018.06.002>
- Baker, Scott R., Nicholas Bloom, and Steven J. Davis. 2016. "Measuring economic policy uncertainty." *The quarterly journal of economics*, 131(4): 1593-1636. <https://doi.org/10.1093/qje/qjw024>
- Balcilar, Mehmet, Zeynel Abidin Ozdemir, and Yalcin Arslanturk. 2010. "Economic Growth and Energy Consumption Causal Nexus Viewed through a Bootstrap Rolling Window." *Energy Economics*, 32(6): 1398-1410. <https://doi.org/10.1016/j.eneco.2010.05.015>
- Balcilar, Mehmet, and Zeynel Abidin Ozdemir. 2013. "The Export-Output Growth Nexus in Japan: A Bootstrap Rolling Window Approach." *Empirical Economics*, 44(2): 639-660. <https://doi.org/10.1007/s00181-012-0562-8>
- Balcilar, Mehmet, Gupta Rangan, Kyei Clement and Wohar Mark E.. 2016. "Does Economic Policy Uncertainty Predict Exchange Rate Returns and Volatility? Evidence from a Nonparametric Causality-in-Quantiles Test." *Open Economies Review*, 27: 229-250. <https://doi.org/10.1007/s11079-016-9388-x>
- Bartsch, Zachary. 2019. "Economic policy uncertainty and dollar-pound exchange rate return volatility." *Journal of International Money and Finance*, 98, 102067. <https://doi.org/10.1016/j.jimonfin.2019.102067>
- Beckmann, Joscha, and Robert Czudaj. 2015. "Exchange rate expectations and

- economic policy uncertainty.” *European Journal of Political Economy* 47: 148-162.
<https://doi.org/10.1016/j.ejpoleco.2016.06.003>
- Benigno, Gianluca, Pierpaolo Benigno, and Salvatore Nisticò. 2012. “Risk, Monetary Policy, and the Exchange Rate.” National Bureau of Economic Research, *NBER Macroeconomics Annual*, 26(1): 247-309. <https://doi.org/10.1086/663993>
- Bhagat, Sanjai, Pulak Ghosh, and Srinivasan P. Rangan. 2013. “Economic Policy Uncertainty and Economic Growth in India.” *Indian Institute of Management, Research Paper*, No. 407. <https://www.jstor.org/stable/44004652>
- Bloom, Nick, Stephen Bond, and John Van Reenen. 2007. “Uncertainty and Investment Dynamics.” *Review of Economic Studies*, 74: 391–415. <https://doi.org/10.1111/j.1467-937X.2007.00426.x>
- Brogaard, Jonathan, and Andrew Detzel. 2015. “The Asset Pricing Implications of Government Economic Policy Uncertainty.” *Working paper series*. <https://doi.org/10.1287/mnsc.2014.2044>
- Chen, Liming, Ziqing Du, and Zhihao Hu. 2020. “Impact of economic policy uncertainty on exchange rate volatility of China.” *Finance Research Letters*, 32: 101266. <https://doi.org/10.1016/j.frl.2019.08.014>
- Cheng, Xin, Hongyi Chen, and Yinggang Zhou. 2021. “Is the RenMinBi a safe-haven currency? Evidence from conditional coskewness and cokurtosis.” *Journal of International Money and Finance*, 113, 102359. <https://doi.org/10.1016/j.jimonfin.2021.102359>
- Colombo, Valentina. 2013. “Economic policy uncertainty in the US: Does it matter for the Euro area?.” *Economics Letters*, 121(1): 39-42. <https://doi.org/10.1016/j.econlet.2013.06.024>
- Demir, Ender, Giray Gozgor, Lau, Keung Marco Chi and Samuel A. Vigne. 2018. "Does economic policy uncertainty predict the Bitcoin returns? An empirical investigation." *Finance Research Letters*, 26: 145-149. <https://doi.org/10.1016/j.frl.2018.01.005>
- Dimitriou, Dimitrios, and Dimitris Kenourgios. 2013. “Financial crises and dynamic linkages among international currencies.” *Journal of International Financial Markets, Institutions and Money*, 26: 319-332. <https://doi.org/10.1016/j.intfin.2013.07.008>
- Fukuda, Shin-ichi. 2015. “Abenomics: Why was it so successful in changing market

- expectations?." *Journal of the Japanese and International Economies*, 37: 1-20. <https://doi.org/10.1016/j.jjie.2015.05.006>
- Goyal, Rishi, and Ronald McKinnon. 2013. "Japan's negative risk premium in interest rates: The liquidity trap and the fall in bank lending." *The World Economy*, 26 (3): 339–363. <https://doi.org/10.1111/1467-9701.00526>
- Gozgor, Giray. 2014. "Determinants of Domestic Credit Levels in Emerging Markets: The Role of External Factors." *Emerging Markets Review*, 18: 1-18 <https://doi.org/10.1016/j.ememar.2013.11.003>
- Hakkio, S. Craig, and Douglas K. Pearce. 1985. "The reaction of exchange rates to economic news." *Economic Inquiry*, 23(4): 621–636. <https://doi.org/10.1111/j.1465-7295.1985.tb01786.x>
- Hausman, K. Joshua, and Johannes F. Wieland. 2014. "Abenomics: Preliminary Analysis and Outlook." *Brookings Papers on Economic Activity*, 1: 1-76. <https://doi.org/10.1353/eca.2014.0001>
- Hirakata, Naohisa, Sudo Nao, Takei Ikuo, and Ueda Kozo. 2016. "Japan's Financial Crises and Lost Decades." *Japan and the World Economy*, 40: 31-46. <https://doi.org/10.1016/j.japwor.2016.07.003>
- Hodrick, J. Robert. 1989. "Risk, Uncertainty, and Exchange Rates." *Journal of Monetary Economics*, 23: 433-59. [https://doi.org/10.1016/0304-3932\(89\)90041-X](https://doi.org/10.1016/0304-3932(89)90041-X)
- Kawai, Masahiro, and Shinji Takagi. 2011. "Why was Japan Hit So Hard by the Global Financial Crisis?" *ADB Working Paper* 153. Tokyo: Asian Development Bank Institute. <https://doi.org/10.4337/9780857931702.00016>
- Kido, Yosuke. 2016. "On the link between the US economic policy uncertainty and exchange rates." *Economics Letters*, 144: 49-52. <https://doi.org/10.1016/j.econlet.2016.04.022>
- Kristoufek, Ladislav. 2020. "Grandpa, grandpa, tell me the one about Bitcoin being a safe haven: New evidence from the COVID-19 pandemic." *Frontiers in Physics*, 8: 296. <https://doi.org/10.3389/fphy.2020.00296>
- Krol, Robert. 2014. "Economic policy uncertainty and exchange rate volatility." *International Finance*, 17(2): 241-256. <https://doi.org/10.1111/infi.12049>
- Li, Zheng-Zheng, Xiong De-Ping, Daniela Lavinia MIHIT, STANCIU Cristina – MANDRULEANU, and COSTEA Florin. 2019. "HOW DOES ECONOMIC POLICY UNCERTAINTY EFFECT SIGNALING EXCHANGE RATE IN

- JAPAN?." *Economic Computation & Economic Cybernetics Studies & Research*, 53.1. <https://doi.org/10.24818/18423264/53.1.19.09>
- Li, Zheng-Zheng, Chi-Wei Su, and Meng Nan Zhu. 2022. "How Does Uncertainty Affect Volatility Correlation between Financial Assets? Evidence from Bitcoin, Stock and Gold." *Emerging Markets Finance and Trade* 58(9): 2682-2694. <https://doi.org/10.1080/1540496X.2021.2009339>
- Lothian, R. James. 2016. "Purchasing power parity and the behavior of prices and nominal exchange rates across exchange-rate regimes." *Journal of International Money and Finance*, 69: 5-21. <https://doi.org/10.1016/j.jimonfin.2016.06.015>
- Nyblom, Jukka. 1989. "Testing for the Constancy of Parameters over Time." *Journal of the American Statistical Association*, 84(405): 223-230. <https://doi.org/10.2307/2289867>
- Panousi, Vasia, and Dimitris Papanikolaou. 2012. "Investment, idiosyncratic risk, and ownership." *The Journal of finance*, 67(3): 1113-1148. <https://doi.org/10.1111/j.1540-6261.2012.01743.x>
- Pastor, Lubos, and Pietro Veronesi. 2012. "Uncertainty about government policy and stock prices." *The Journal of Finance*, 67(4): 1219-1264. <https://doi.org/10.1111/j.1540-6261.2012.01746.x>
- Pesaran, M. Hashem, and Allan Timmermann. 2005. "Small Sample Properties of Forecasts from Autoregressive Models under Structural Breaks." *Journal of Econometrics*, 129(2): 183-217. <https://doi.org/10.1016/j.jeconom.2004.09.007>
- Shukur, Ghazi, and Panagiotis Mantalos. 2000. "A Simple Investigation of the Granger-Causality Test in Integrated-Cointegrated VAR Systems." *Journal of Applied Statistics*, 27(8): 1021-1031. <https://doi.org/10.1080/02664760050173346>
- Sims, A. Christopher, James H. Stock, and Mark W. Watson. 1990. "Inference in Linear Time Series with Some Unit Roots." *Econometrica*, 58(1): 113-144. <https://doi.org/10.2307/2938337>
- Steinbock, Dan. 2018. "US-China trade war and its global impacts." *China Quarterly of International Strategic Studies*, 4(04): 515-542. <https://doi.org/10.1142/S2377740018500318>
- Su, Chi Wei, Yuan Xi, Tao Ran, and Umar Muhammad, 2021. "Can Bitcoin be a safe haven in fear sentiment?", *Technological and Economic Development of Economy*, 28(2): 268-289. <https://doi.org/10.3846/tede.2022.1.5502>.

- Su, David, Li Xin, Lobonț Oana-Ramona, and Zhao Yanping. 2016. "Economic Policy Uncertainty and Housing Returns in Germany: Evidence from a Bootstrap Rolling Window." *Social Science Electronic Publishing*, 34(1): 43-61. <https://doi.org/10.18045/zbefri.2016.1.43>
- Su, Chi-Wei, Yuan Xi, Ran Tao, and Muhammad Umar. 2022a. "Can Bitcoin be a safe haven in fear sentiment?." *Technological and Economic Development of Economy*, 28(2): 268-289. <https://doi.org/10.3846/tede.2022.15502>
- Su, Chi-Wei, Pang Lidong, Umar Muhammad, Lobonț Oana-Ramona, and Moldovan Nicoleta-Claudia. 2022b. "Does gold's hedging uncertainty aura fade away?." *Resources Policy*, 77: 102726. <https://doi.org/10.1016/j.resourpol.2022.102726>
- Su, Chi Wei, Pang Lidong, Umar Muhammad, and Lobonț Oana-Ramona. 2022c, "Will Gold Always Shine amid World Uncertainty?", *Emerging Markets Finance and Trade*, 58(12): 1-14. <https://doi.org/10.1080/1540496X.2022.2050462>
- Thorbecke, Willem. 2022. "Investigating how exchange rates affected the Japanese economy after the advent of Abenomics." *Asia and the Global Economy*, 2(1): 100028. <https://doi.org/10.1016/j.aglobe.2022.100028>
- Toda, Y. Hiro, and Taku Yamamoto. 1995. "Statistical Inference in Vector Autoregressions with Possibly Integrated Processes." *Journal of Econometrics*, 66(2): 225-250. [https://doi.org/10.1016/0304-4076\(94\)01616-8](https://doi.org/10.1016/0304-4076(94)01616-8)
- Tiwari, Aviral Kumar, R. K. Jana, and David Roubaud. 2019. "The policy uncertainty and market volatility puzzle: Evidence from wavelet analysis." *Finance Research Letters*, 31. <https://doi.org/10.1016/j.frl.2018.11.016>
- Wang, Panpan, Yishi Li, and Sixu Wu. 2022. "Time-varying Effects of US Economic Policy Uncertainty on Exchange Rate Return and Volatility in China." *Emerging Markets Finance and Trade*, 58(7): 1807-1820. <https://doi.org/10.1080/1540496X.2021.1937114>
- Yoshino, Naoyuki, and Farhad Taghizadeh-Hesary. 2014. "An analysis of challenges faced by Japan's economy and Abenomics." *The Japanese Political Economy*, 40(3-4): 37-62. <https://doi.org/10.1080/2329194X.2014.998591>

Table 1. Descriptive Statistics

Series	Mean	Max.	Min.	SD	Skewness	Kurtosis	Jarque-Bera
EPU in Japan	4.634	5.476	3.885	0.292	0.141	2.895	1.001
RER	-0.002	0.106	-0.068	0.021	0.375	5.357	67.862***
EPU in U.S.	4.830	6.222	3.802	0.427	0.296	3.205	4.372

Notes: ***denotes significance at 1%.

Table 2. Parameter Stability Tests

	EPU Equation		RER Equation		U.S. Equation		VAR System	
	Statistics	<i>p</i> -value	Statistics	<i>p</i> -value	Statistics	<i>p</i> -value	Statistics	<i>p</i> -value
<i>Sup-F</i>	35.568**	0.00	29.796**	0.00	26.556**	0.00	47.211*	0.02
	*	0	*	2	*	9	*	1
<i>Mean</i>	14.025**	0.00		0.23	12.703**	0.02	30.200*	0.02
<i>-F</i>	*	1	8.538	3		7	*	7
<i>Exp-F</i>	13.412**	0.00	10.816**	0.00	9.979***	0.00	19.753*	0.02
	*	0	*	4		8	*	1
<i>L_c^b</i>								0.01
							5.302**	3

Notes: We calculate *p*-values using 10,000 bootstrap repetitions.

** and *** denote significance at 5 and 1 percent, respectively.

^b Hansen-Nyblom (L_c^b) parameter stability test for all parameters in the VAR System jointly. Residual-based bootstrap *LR* causality Tests are used to account for small-sample bias.

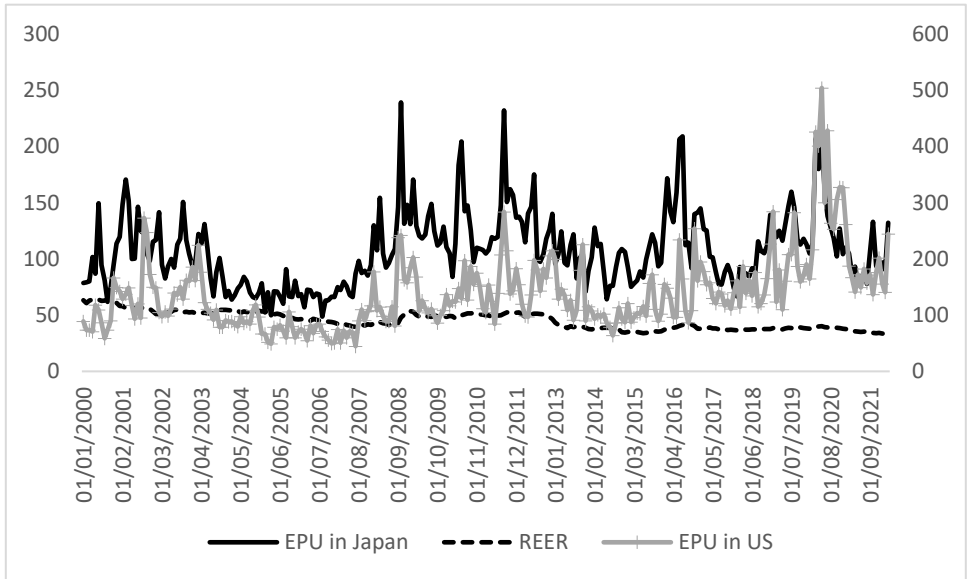


Figure 1. The trend of REER and EPUs

Note: The EPUs correspond to the left y-axis; and REER corresponds to the right y-axis.

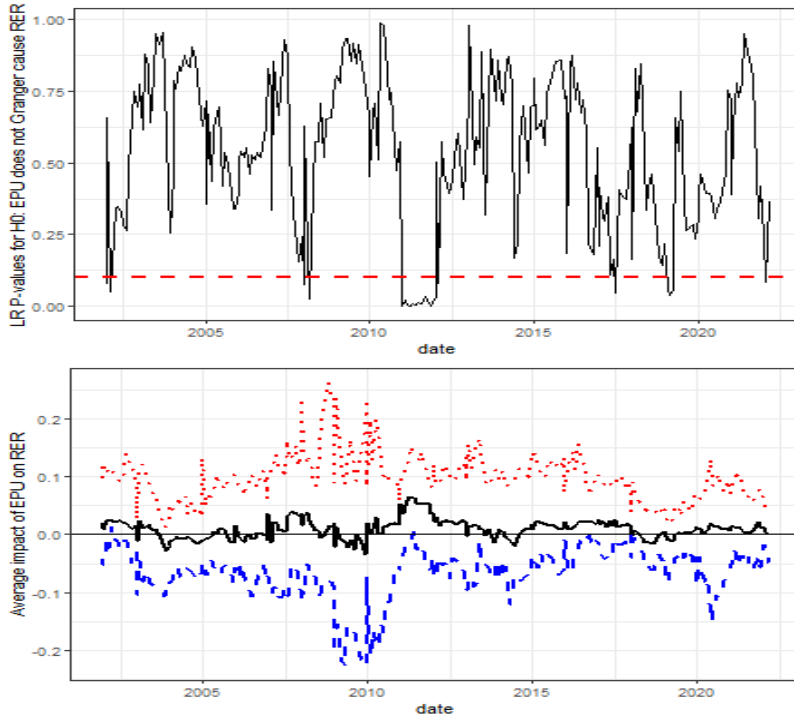


Figure 2. Bootstrap p -values and coefficients for the Japanese EPU and RER

Note: The EPU of U.S. is considered as the controlling variable.

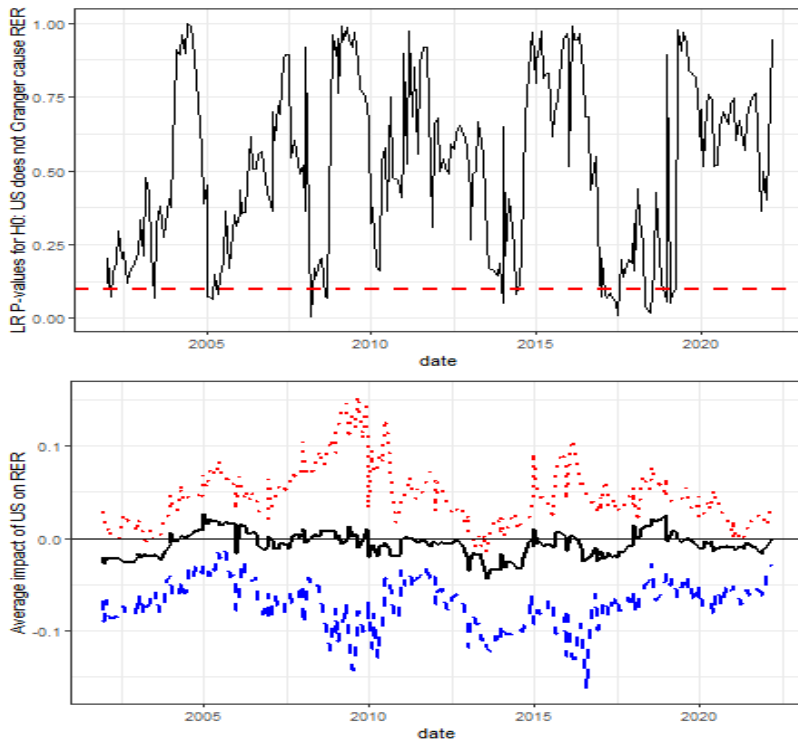


Figure 3. Bootstrap p -values and coefficients for the U.S. EPU and RER

Note: The EPU of Japan is considered as the controlling variable.